



*Gaudio*

**USER**  
**BOOKLET**

*Gaudio*

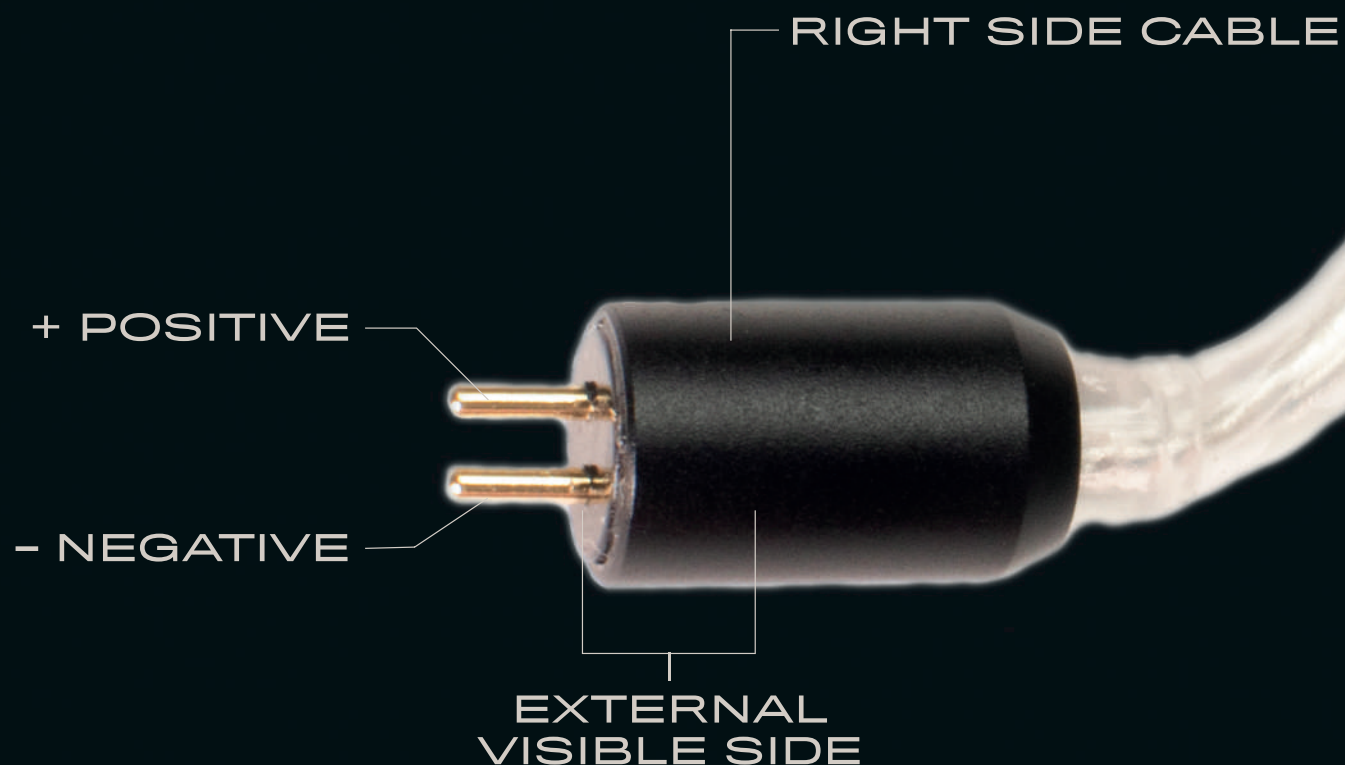


## CABLE CONNECTION

*The earphones are composed of a Left and a Right earpiece. The Right one is identifiable by the G logo on the inlay.*

*To identify the correct orientation of the 2-pin cable, check the L and R markings (left and right respectively) on the cable connectors. The L/R marking should face the head and not be visible from the outside when the earphones are worn; the fold of the cord should face upwards to allow it to be worn behind the ear and follow the contour.*

*Gaudio*



## CABLE CONNECTION

*Connect the Right cable (R marking) with the Right earpiece. Connect the Left cable (L marking) with the Left earpiece. The connection system (cable-earphone) has not been configured to withstand frequent connections and disconnections but to firmly hold the cable in place during normal usage. Please avoid unnecessary connections/disconnections.*

*When strictly needed, grab the cable on the metal connector (not on the cable itself!) and apply a gentle straight pull force to allow the connector to detach from the earphones. Take care of not bending the cable connector or otherwise you will risk damaging it or the female connector in the earphones.*





## EARTIPS & FIT

*The use of ear tips is mandatory. The earphones come with five (5) kits of ear tips. The sizes consist of XS, S, M, L and XL. For optimal sound reproduction, please use the size, which guarantees a perfect fit, both in terms of comfort and isolation from outside noise. Since the ear canal shape may be different in the same person, you may need different sizes for your left and right ears.*

*The earphones were conceived by using the provided ear tips; the use of other ones which may differ in dimensions, shape or materials will have an impact on the perceived sound quality.*

*We conceived the shape for optimal comfort; to reach the best fit you can practise by using the smallest provided tips (XS) and by gently rotating the earphones back and forth until they slip into your ears.*

*The zone in contact with your ear is modelled to provide a good seating and grip to your concha and cymba.*





## **HANDLING, CARE AND RECOMMENDATION FOR USE**

*Earphones are composed of small and delicate electronic parts such as micro-speakers, resistors, inductors, capacitors and other components and therefore careful handling is necessary to ensure proper operation. Hence avoid dropping, crushing and disassembling the earphones.*

*The earphone being metallic could get hot or cold due to the environment. A rapid change in temperature could therefore create some condensation; to avoid malfunctions due to excessive humidity please allow some time for the metal to get to a normal temperature before using your earphones.*







## HANDLING, CARE AND RECOMMENDATION FOR USE


*The external surfaces are treated with a non-toxic anodizing coating, but in case you should be affected by any allergic reaction (dermatitis) remove the earphones immediately, Stop using them and contact your regular physician.*

*Also, in case you should feel pain in wearing them, due to an incompatible shape of your ears or ear canals with the product dimensions, stop using them.*

*To prevent possible hearing damage, do not listen at high volume levels for long periods.*

*The following chart refers to **NIOSH** standard for daily permissible noise level exposure.*

**THE USER BEARS SOLE RESPONSIBILITY FOR THE VOLUME AT WHICH HE/SHE USES THE IN-EAR MONITORS.**



CONTINUOUS dB	PERMISSIBLE EXPOSURE TIME
85	8 Hours
88	4 Hours
91	2 Hours
94	1 Hours
97	30 minutes
100	15 minutes
103	7.5 minutes
106	3.75 minutes (<4min)
109	1.875 minutes (<2min)
112	.9375 minutes (<1min)
115	.46875 minutes (<30sec)

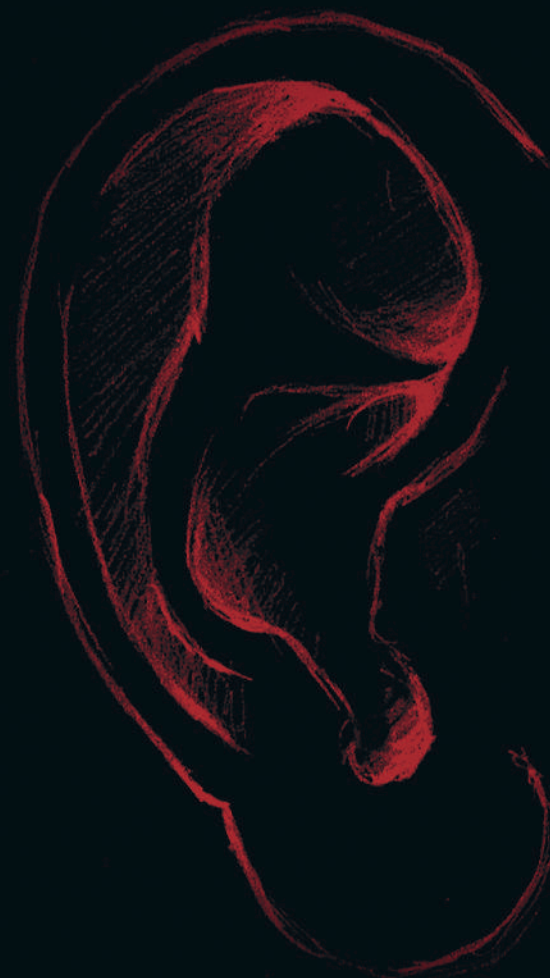


## HANDLING, CARE AND RECOMMENDATION FOR USE

*For optimal sound performance over time, please use the provided cleaning tool to keep the holes/tubes in the nozzle clean from any earwax or debris. If any acoustic/protection filter is included in your product please pay extra care to not touch, push or pierce them by any means.*

*In some models the speaker(s) could be reachable with the cleaning tool; please pay extra care to not touch, push or damage these parts. Such damages will not be covered by the warranty.*

*In general, using a common-sense approach will grant your earphones last many years.*





## STORAGE

*Improper storage may cause the product to fail.*

*Avoid environments like direct sunlight, high humidity, dust, chemical agents and extreme temperatures.*

*Keep your earphones in a dry place.*

*When carrying your earphones outside, use the included pouch case*





*Gaudio*

[support@gaudiolabs.com](mailto:support@gaudiolabs.com)